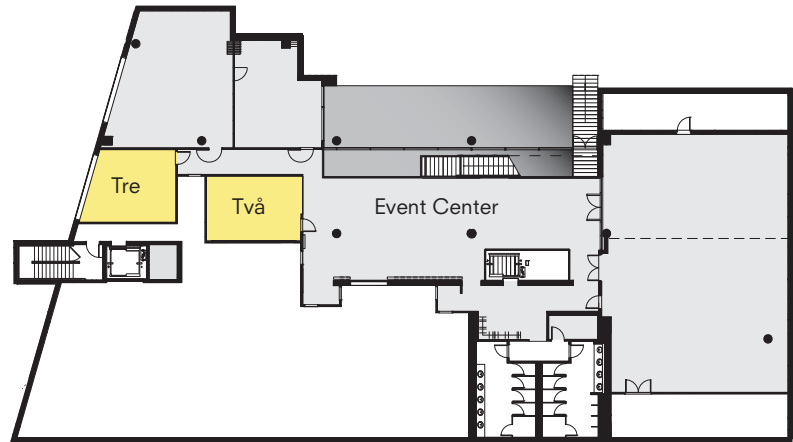


# Två & Tre

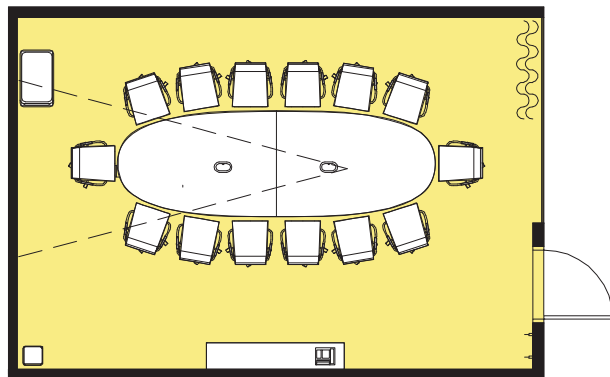
Två and Tre, two intimate conference rooms on House of Sweden's first floor, are ideal for smaller meetings or as part of a larger event as breakout rooms. Each room comes equipped with a projector and can comfortably accommodate up to 14 people.



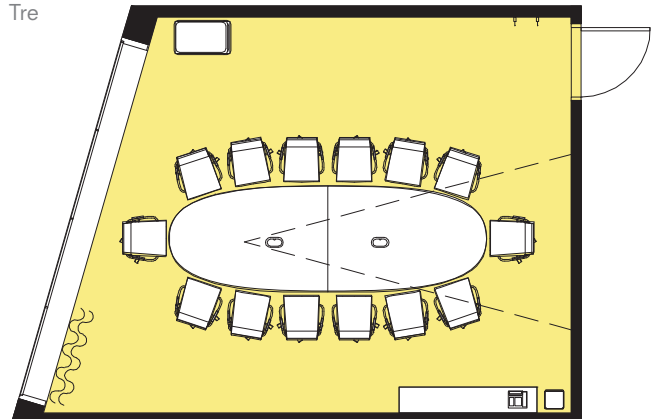
## Meeting capacities

Rooms	Dimensions (ft.)	Size (sq.ft.)	Size (sq.m.)	Ht. (ft.)	Capacities Conference
Två	22x15	340	32	8'-5	14 pers
Tre	21x17	350	33	9'-0	14 pers

Två



Tre



# HOUSE OF SWEDEN

House of Sweden, 2900 K Street NW, Washington DC 20007

+1 202 536 1500

info@houseofsweden.com

[www.houseofsweden.com](http://www.houseofsweden.com)

House of Sweden is a registered trademark owned and managed by the Swedish state through the National Property Board Sweden

