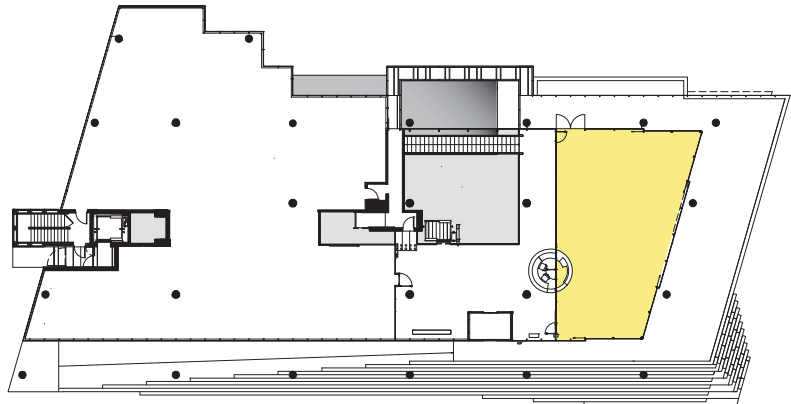


The Anna Lindh Hall

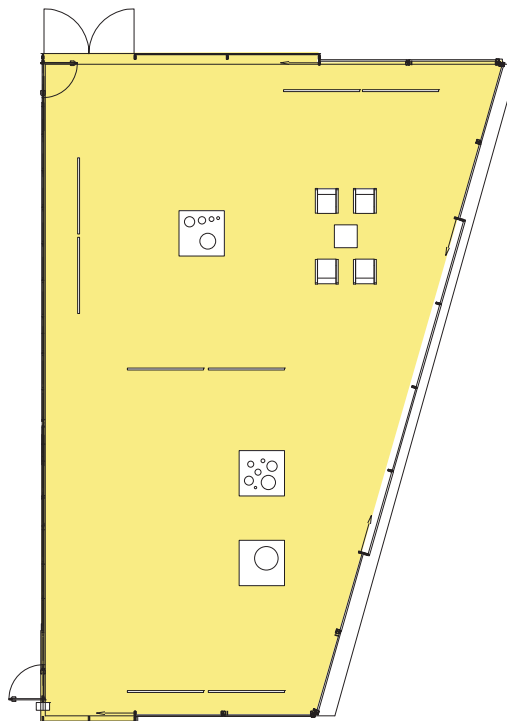
Anna Lindh Hall is House of Sweden’s most popular space. Its glass walls bring the outdoors inside, providing event-goers with spectacular views of both the Potomac River and Rock Creek. Its entrance is flanked by two ten-foot-high running waterfalls – a great photo backdrop! Four sliding glass doors open up directly onto House of Sweden’s stone terrace.

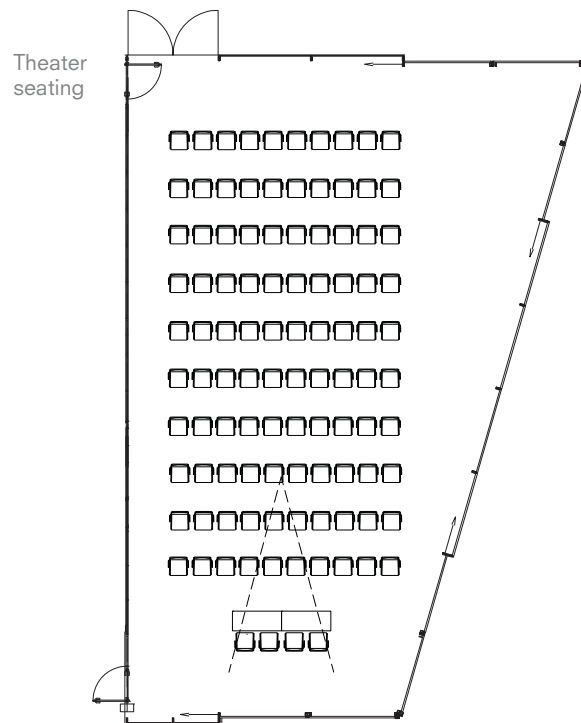
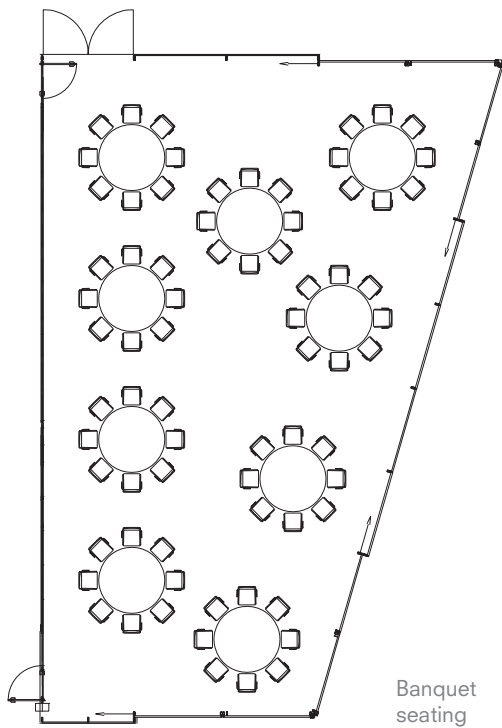


Meeting Capacities

Room	Dimension (ft)	Size (sq.ft.)	Size (sq.m)	Ht. ft.	Capacities Banquet	Theater	Reception
The Anna Lindh Hall	32x57	1840	171	10'-0"	100 pers	100 pers	100 pers

Example of exhibition layout
- see opposite page for conference layouts





HOUSE OF SWEDEN

House of Sweden, 2900 K Street NW, Washington DC 20007

+1 202 536 1500

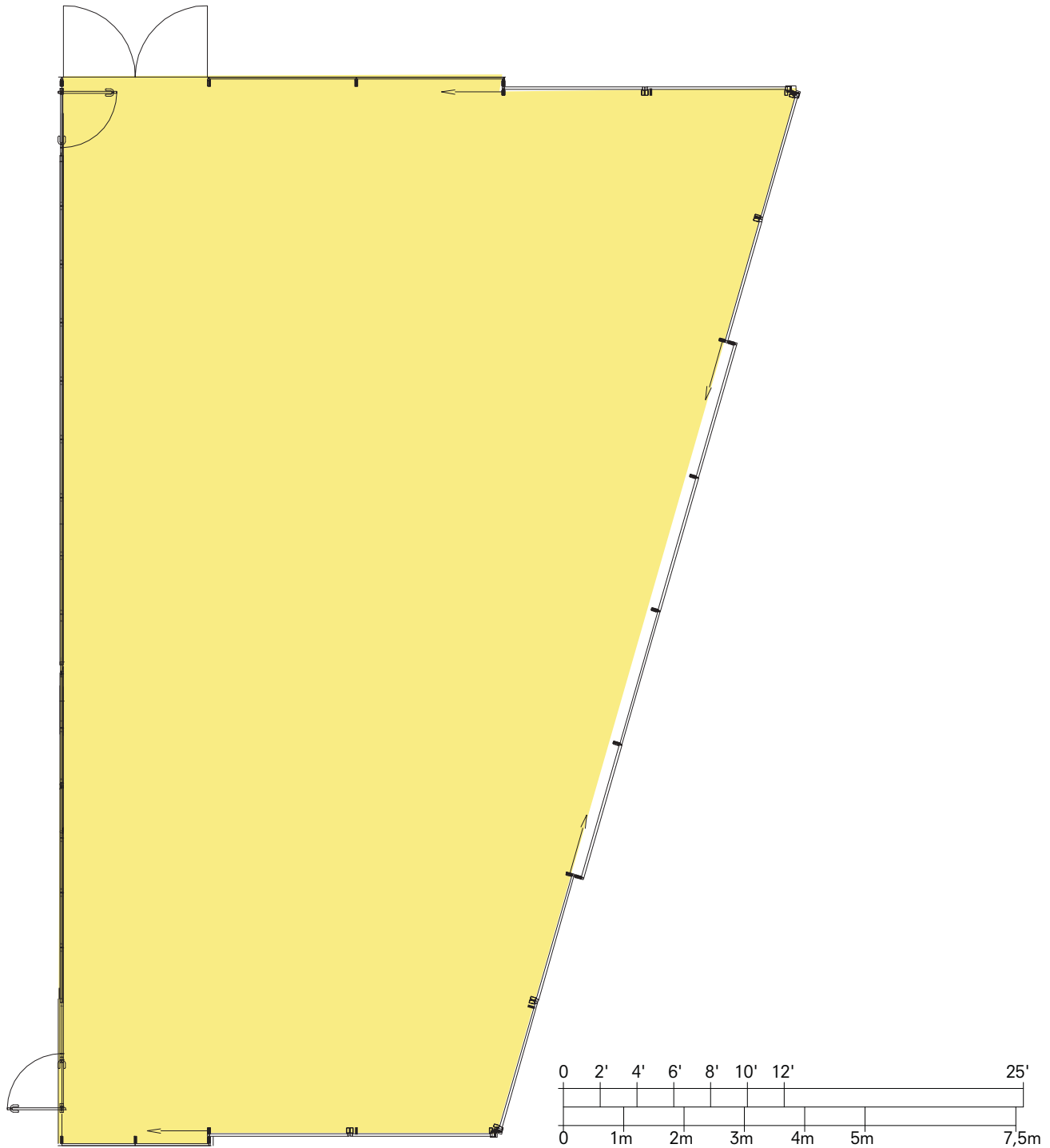
info@houseofsweden.com

www.houseofsweden.com

House of Sweden is a registered trademark owned and managed by the Swedish state through the National Property Board Sweden



The Anna Lindh Hall



HOUSE OF SWEDEN

House of Sweden, 2900 K Street NW, Washington DC 20007

+1 202 536 1500

info@houseofsweden.com

www.houseofsweden.com

House of Sweden is a registered trademark owned and managed by the Swedish state through the National Property Board Sweden

