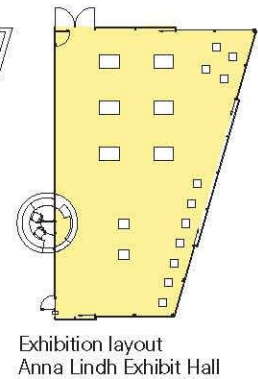
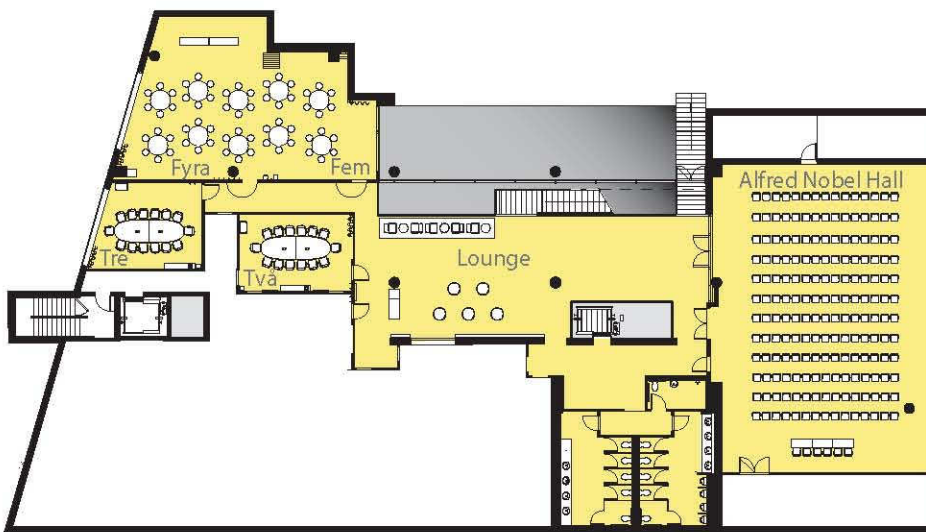


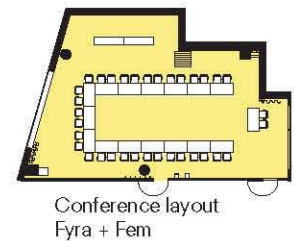
Floor 1 Entrance Lobby and Anna Lindh Exhibit Hall



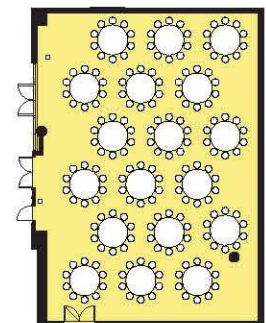
Exhibition layout
Anna Lindh Exhibit Hall



Floor 2 Event Center and Alfred Nobel Hall



Conference layout
Fyra + Fem



Banquet layout
Alfred Nobel Hall

Meeting capacities

Conference hall	Dimension (ft.)	Size		Ht. (ft.)	Capacities				
		(sq. ft.)	(sq. m.)		Banquet seated	Reception	Theater	Conference	Classroom
Anna Lindh Exhibit Hall	32x57	1840	171	10'-0"	100 pers	100 pers	100 pers	-	-
Alfred Nobel Hall	44x61	2670	248	9'-0"	180 pers	180 pers	180 pers	140 pers	120 pers
Två	22x15	340	32	8'-5"	-	-	-	14 pers	-
Tre	21x17	350	33	9'-0"	-	-	-	14 pers	-
Fyra	27x33	870	81	9'-0"	40 pers	50 pers	-	34 pers	28 pers
Fem	21x25	475	44	9'-0"	-	-	-	16 pers	16 pers
Fyra + Fem	48x33	1340	125	9'-0"	60 pers	80 pers	74 pers	50 pers	50 pers
Lounge	65x20	1300	130	9'-0"	60 pers	100 pers	-	-	-

HOUSE OF SWEDEN

House of Sweden, 2900 K Street NW, Washington DC 20007

+1 202 536 1500

info@houseofsweden.com

www.houseofsweden.com

House of Sweden is a registered trademark owned and managed by the Swedish state through the National Property Board Sweden

